

MAX Pivot Analysis Datasheet

Overview

The MAX Pivot Analysis is a series of web-based pages that provide analysis of the MAX Sales data in a grid, Excel or chart format.

The current MAX data that can be analyzed includes revenue in monthly increments for the following:

- MAX Sales Bookings
- MAX Sales Backlog
- MAX Shipments
- MAX Invoices

Additionally, the data can be presented in the following row selections:

- Sales Rep
- Territory
- General Ledger Account
- Product Line

The user can set the range of the months by selecting the Start With and End With period based on the data selected. For example, the bookings data can be analyzed by Order Date or Ship Date.

The primary pages provide the selection criteria and the output formats as shown below:

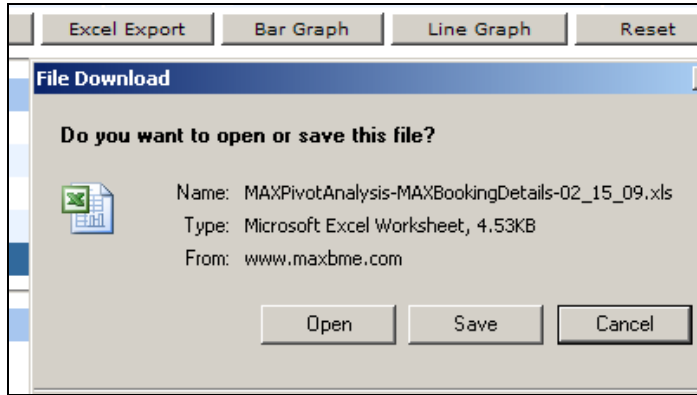
Other datasets are coming for:

- MAX PO Receipt Value per month
- Open PO Value by Month (based on schedule receipt date)

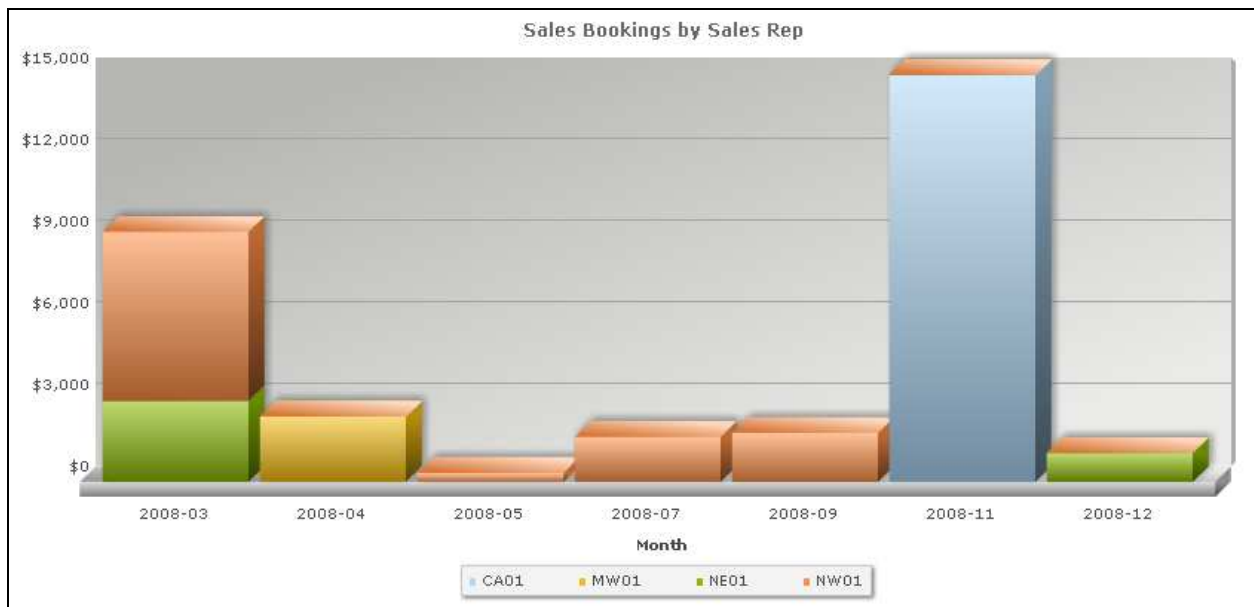
MAX Pivot Analysis										
Select Data Set:	MAX Bookings					Select Row:	Sales Rep			
Select Column:	Order Month									
Select Start With:	2008-03					Select End With:	2008-12			
Submit Excel Export Bar Graph Line Graph Reset										
Sales Rep	2008-03	2008-04	2008-05	2008-06	2008-07	2008-08	2008-09	2008-10	2008-11	2008-12
CA01	\$0	\$0	\$0	\$0	\$0	\$0	\$0	\$0	\$14,925	\$0
MW01	\$0	\$2,398	\$0	\$0	\$0	\$0	\$0	\$0	\$0	\$0
NE01	\$2,967	\$0	\$0	\$0	\$0	\$0	\$0	\$0	\$0	\$1,057
NW01	\$6,210	\$0	\$333	\$0	\$1,654	\$0	\$1,793	\$0	\$0	\$0
Totals	\$9,178	\$2,398	\$333	\$0	\$1,654	\$0	\$1,793	\$0	\$14,925	\$1,057

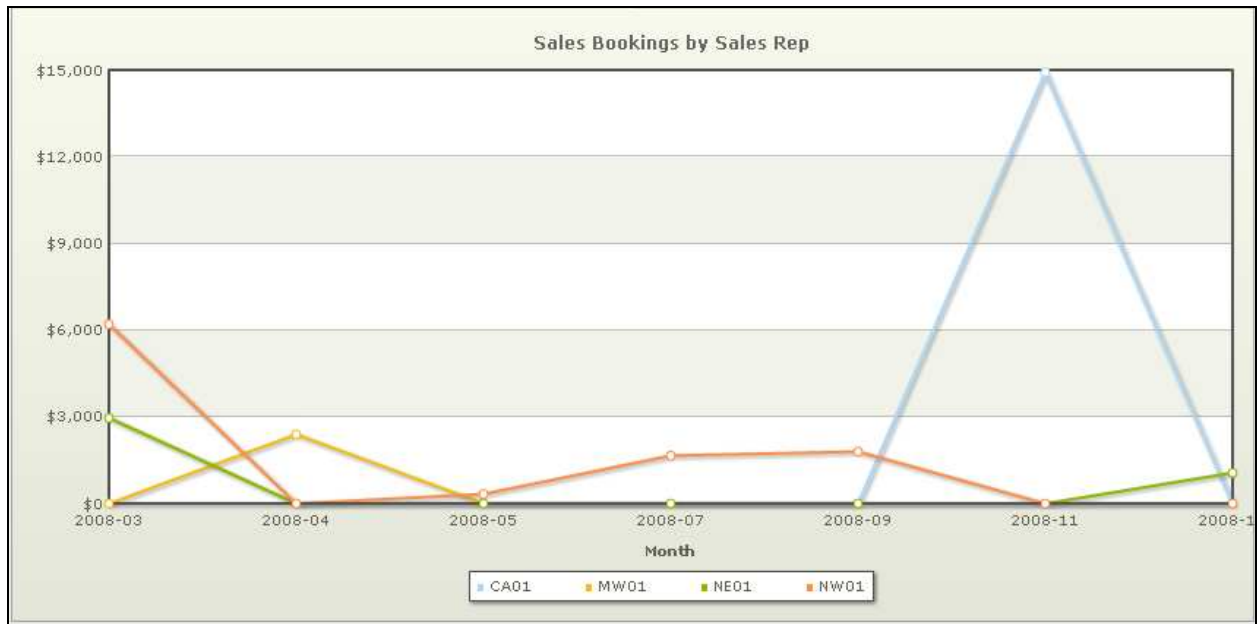
© 2008 PlusPoint Development -- All Rights Reserved.

Once the data has been defined, the user has the option of exporting the results to an Excel worksheet.



Optionally, the results can also be viewed a stacked bar graph or a line graph.





The MAX Pivot Analysis pack is delivered and installed via Remote Desktop access for a fixed fee of 12 hours of consulting using MAX 5.0 and SQL Server.

Connection to MAX 4.0 via SQL can be done on a billable time basis. Optionally, other MAX, Synergy or external data sets may be added on a billable time basis.

Contact your Exact Account Manager to arrange for purchase and installation.